

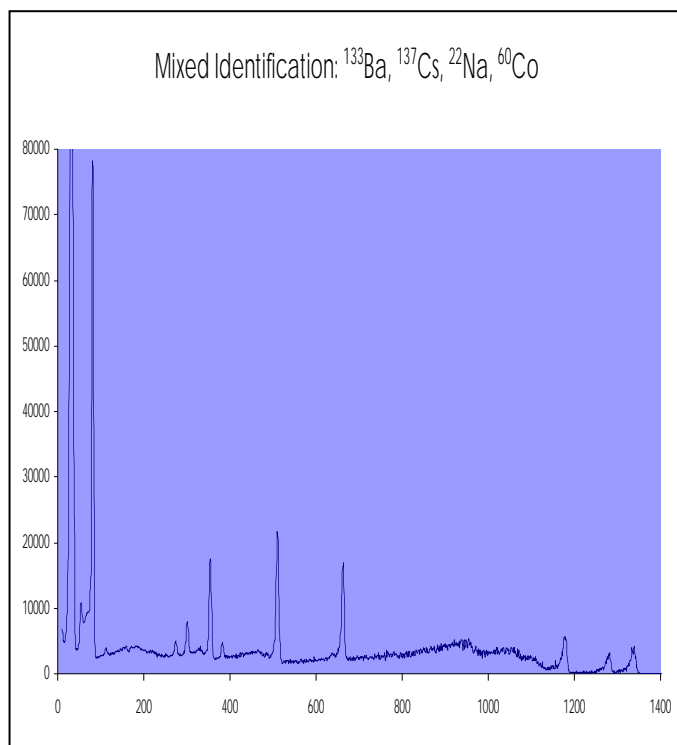
ICS 4000

**Now With CdTe Detector
A Great Device Made Even Better**

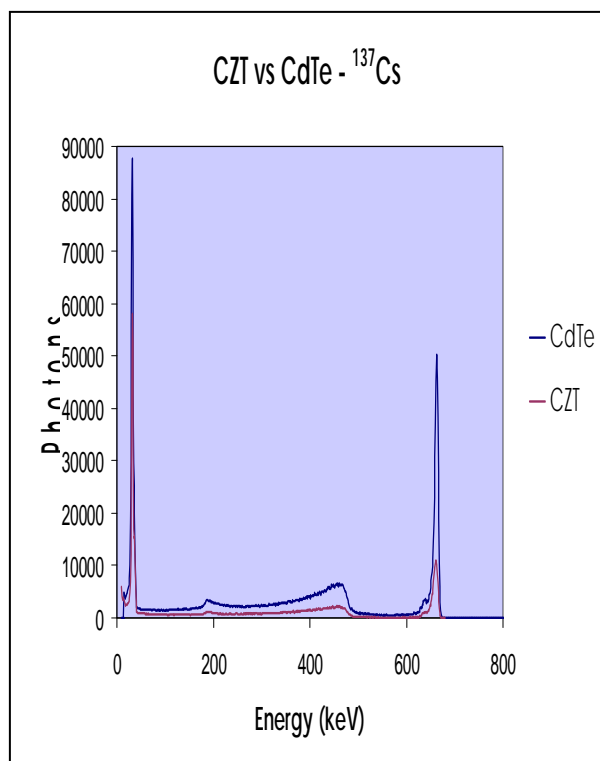


CdTe Detector Model Improvements Include:

- Faster radionuclide identifications
- Increased detector efficiency
- Enhanced spectral resolution
- Weather proofing - IP65
- Shock resistance



**80% faster identifications of ^{137}Cs | 70% faster identifications of ^{60}Co
70% faster identifications of mixed radionuclides (^{133}Ba ^{137}Cs ^{22}Na ^{60}Co)**



CdTe detector provides up to 10x improvement in photopeak efficiency for high energy gamma rays

Sensitivity:

²⁴¹Am: 2900 cps/mR/h

¹³⁷Cs: 90 cps/mR/h – ⁶⁰Co 25 cps/mR/h

CZT detector provided 1.5% spectral resolution
CdTe detector provides up to 1% spectral resolution

