



Rad-DX

Wireless Mesh Networked Radiation Monitor



Non-LCD Version



FEATURES

- D-tect SensorNet™ (mesh network) equipped – automatic connections between all Rad-DXs
- Integrates with your local network integration via encrypted WiFi or Ethernet
- User-friendly and familiar “1”-“9” display available
- Battery back-up for added reliability
- Control and monitor on PC, tablet or smartphone
- Integrated floor plan design shows device location and provides system data management
- Mounts on standard electrical junction box
- Blends into public areas - small, lightweight, and discreet
- IP65 rated (sealed against dust and rain)
- Radiation detection in less than 1 second
- Sensitive Dose Rate and Total Dose measurement and recording

The Rad-DX is a wireless mesh networked radiation detector with a sensitive scintillation detector which allows it to detect discreet sources of radiation in less than one second. Dual versions are available; with and without display. External audible and visual alarms are available for high noise and/or industrial applications. We also offer the *Rad-DX SafeGuard* model for harsh outdoor environments.



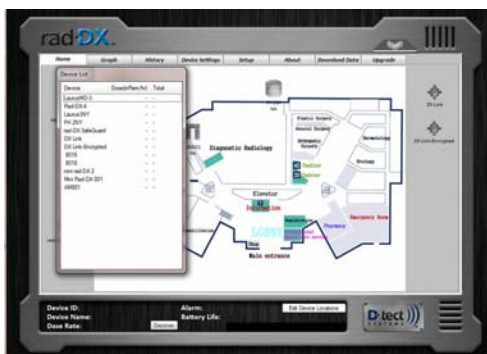
Protective Wire Cage

Rad-DX

COMMUNICATION

The Rad-DX operates on the new and exclusive D-tect **SensorNet** - an automatic communication network that allows users to monitor a full network of Rad-DX's as well as other SensorNet enabled devices. No loss of communication will occur as long as the devices are in range of a single mesh enabled device (up to 1000 meters)! The Rad-DX units will automatically form an intelligent, self-healing mesh network, allowing them to be constantly connected to each other as well as to the user network.

Expanded communication capabilities are accomplished using the DX-Link, a small wireless USB device designed to facilitate mesh communication with one or more Rad-DX detectors. These devices can be used to replace the USB cable between a PC and Rad-DX. They can also be used as gateways to monitor an entire Rad-DX network, and as an intermediary or 'repeater' to improve the signal strength of the mesh network.



DX-View Software Application



DX-Link (mesh relay)

RAD-DX SPECIFICATIONS*

Detectors	Large 6cm ³ scintillation crystal - CsI
Communication	D-tect SensorNet, WiFi, Ethernet, USB
Power	120/240V AC, 50/60Hz, 110/220V – Auto Detect, < 10 watts
Installation	Mount directly to junction box, Standard power cord
Battery Back-Up	Lithium Ion, 3 Hours
Detection Speed	Less than 1 second
Energy Range	59 keV – 2 MeV
Calibration	On-site calibration with DX-View
Units	uR/Hr, mR/Hr, uSv/Hr, "1"- "9"
Dose Rate Range	Min 1 uR/Hr (.01 uSv/Hr) Max 100 mR/Hr (1000 uSv/Hr)
DR Linear Error	+/- 10% to Cs137
Alarms	Visual and audible (80dB @ 30 cm)
Dimensions	5.97" x 5.92" x 1.75" (15.2 cm x 15 cm x 4.4 cm) Optional NEMA Enc - 14" x 12" x 7"
Weight	Non-Display Version - .5 Lb (.2 Kg) W/Display - .65 Lb (.3 Kg) W/NEMA Enc – 13 Lb (5.9 Kg)
Environment*	IP65 rated for indoor/outdoor operation; -10° to 125° F (-23° to 52°C)

CONTROL & MONITOR BY SMARTPHONE

Each Rad-DX can be controlled and monitored by a PC on the network or across the internet on any Tablet or remote PC. 128-bit encryption protected. Monitoring can be real-time or past event logs can be reviewed.

INTUITIVE INFORMATION DISPLAYS

Monitor all the Rad-DXs on a floor plan, within a facility or on wide area map. The display provides an intuitive understanding of the location of the devices and can track the motion of a radioactive source. Dose rates can be viewed in multiple graph formats.

DIVERSE APPLICATIONS

The Rad-DX is ideal for security and infrastructure protection applications – waste management – hospitals – industry – or any location where accurate, versatile and economical radiation monitoring is needed.

