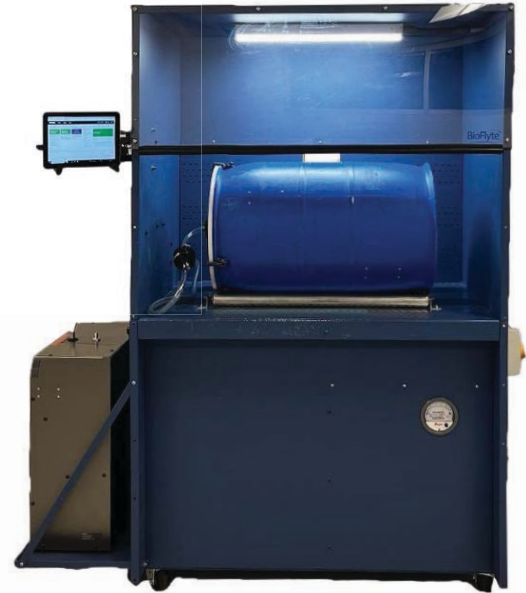


MAILSCREEN™ z200

Mailroom Workstation For Threat Identification



The MailScreen™ 200 Mailroom Workstation is a fast, accurate, and cost-effective threat detection workstation to safely identify hazardous biological powders in mail and parcels.

When used in combination with radiological, explosives and bomb screening capabilities, MailScreen offers an “all hazards” solution to mailroom risk management.

The heart of the biothreat detection capability is BioFlyte's BioTOF™ z200 Bioaerosol Identifier. BioTOF is a state-of-the-art MALDI time-of-flight mass spectrometer incorporating robotics to automatically collect and analyze aerosol samples for threats. BioFlyte is the first company to bring this proven analysis tool from the clinical lab to the point of need.

MailScreen includes a Windows-based tablet computer, which serves as the system's Command Console, to operate the sensor. The console displays operational status, maintenance notifications, and communicates the results of MailScreen analysis to the operator. Detailed sensor data, such as spectrums from recent analyses and the status of each sensor, is accessible through the touch screen display.

KEY BENEFITS

- Agent identification in less than 6 minutes
- Detects and identifies all classes of bioagents
- New threats easily added to library via software update
- Excellent sensitivity: as little as 100mg of threat agent in a single parcel
- Specificity: species level
- Easy to operate: simply press start button
- Requires very little maintenance

FEATURES

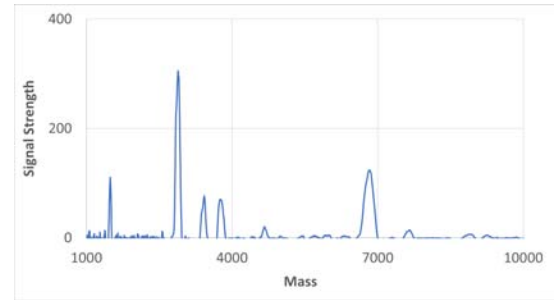
- MALDI time-of-flight mass spectrometer for bio-threat and opioid identification
- Downdraft table workspace designed to protect operator from potential hazardous aerosols
- Competitive total cost of ownership: no bio-molecular reagents
- Easily networked into secure LAN or cloud
- Optional forensics sample collection
- Continuously monitors the air for aerosol threats

MAILSCREEN z200

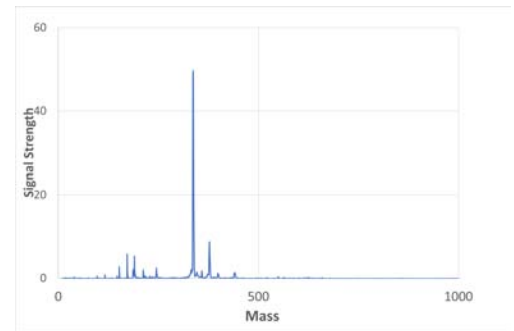
SPECIFICATIONS

| Detected Threats List: | List includes, but is not limited to <ul style="list-style-type: none">• B. anthracis Sterne• F. tularensis• Y. pestis• Ricin toxin• Fentanyl | | | | | | | | | | | | | | | |
|-------------------------------|---|-------------------------|---------------|------------------------|-------|---------------|---------------------|--------|---------------|------------------------|---------|---------------|-----------------------|---------|---------------|-------------------------|
| Sensitivity: | 100 mg threat powder contained in a single item of mail within a batch | | | | | | | | | | | | | | | |
| Specificity: | Species level for biothreats Compound level for chemical threats | | | | | | | | | | | | | | | |
| Detection Time: | Under 6 minutes | | | | | | | | | | | | | | | |
| Maintenance interval: | Standard 3 months (adjustable based on usage model) | | | | | | | | | | | | | | | |
| Consumables: | Replacement of sample disk cartridge set every 100 assays | | | | | | | | | | | | | | | |
| Power: | Input Power AC Voltage: 110-220Vac Power Consumption: 100 W (nominal) 300 W (peak) | | | | | | | | | | | | | | | |
| Size and Weight: | <table border="1"><thead><tr><th></th><th><u>BioTOF</u></th><th><u>Downdraft Table</u></th></tr></thead><tbody><tr><td>Width</td><td>20.9" (53 cm)</td><td>Width: 30.0" (76cm)</td></tr><tr><td>Height</td><td>27.5" (70 cm)</td><td>Height: 80.0" (198 cm)</td></tr><tr><td>kgDepth</td><td>11.0" (28 cm)</td><td>Depth: 48.0" (122 cm)</td></tr><tr><td>Weight:</td><td>75 lb (34 kg)</td><td>Weight: 895 lb (406 kg)</td></tr></tbody></table> | | <u>BioTOF</u> | <u>Downdraft Table</u> | Width | 20.9" (53 cm) | Width: 30.0" (76cm) | Height | 27.5" (70 cm) | Height: 80.0" (198 cm) | kgDepth | 11.0" (28 cm) | Depth: 48.0" (122 cm) | Weight: | 75 lb (34 kg) | Weight: 895 lb (406 kg) |
| | <u>BioTOF</u> | <u>Downdraft Table</u> | | | | | | | | | | | | | | |
| Width | 20.9" (53 cm) | Width: 30.0" (76cm) | | | | | | | | | | | | | | |
| Height | 27.5" (70 cm) | Height: 80.0" (198 cm) | | | | | | | | | | | | | | |
| kgDepth | 11.0" (28 cm) | Depth: 48.0" (122 cm) | | | | | | | | | | | | | | |
| Weight: | 75 lb (34 kg) | Weight: 895 lb (406 kg) | | | | | | | | | | | | | | |
| Air Sampling Rate: | 33 liters per minute | | | | | | | | | | | | | | | |
| Environmental: | Intended for indoor applications | | | | | | | | | | | | | | | |
| Humidity: | 5 – 95% (non-condensing) | | | | | | | | | | | | | | | |

Typical Mass Spectra from BioTOF Sensor



Mass Spectrum for Bacillus Spore



Mass Spectrum for Aerosolized Fentanyl

Spectra from operational environments are compared to spectra in the BioTOF library. An alarm is generated if a match is found.

CONCEPT OF OPERATIONS

MailScreen 200 System is a fast, accurate, and cost-effective mail hazards detection workstation to safely identify hazardous biological and chemical agents in mail and parcels. The system also includes options to screen mail for the detection of radiological hazards. MailScreen complements explosives and bomb screening capabilities, as well, enabling an "all hazards" approach to mailroom risk management.

OPERATIONAL EXPERIENCE

Accurate - Zero false alarms in over 12,000 tests

Reliable - Analyzed over 1 million parcels of mail

Secure - Operates independent of local networks



LAURUS Systems, Inc. - Ph: 410-465-5558 - Fax: 410-465-5257 - www.LaurusSystems.com

