

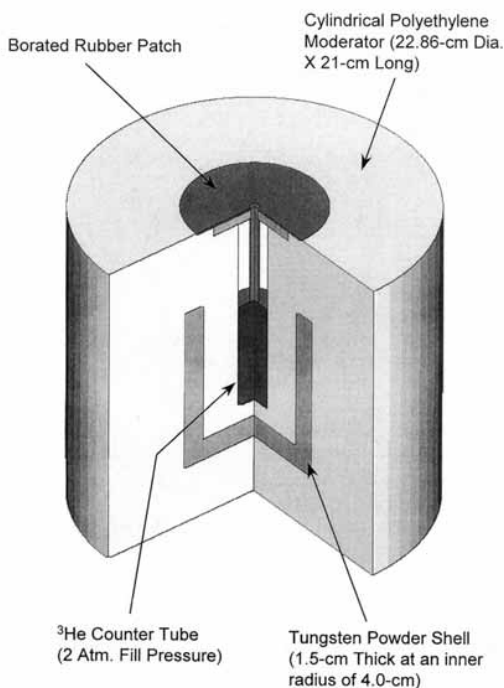
# FHT 762 Wendi-2

## Wide Energy Neutron Detector



- Thermal to 5 GeV energy range according to H\*(10), ICRP 74
- High sensitivity due to large He-3 tube
- Excellent gamma rejection
- Fits to FHT 6020 area monitor, FH 40 survey meter and RadEye PX

The FHT 762 is a neutron dose rate detector featuring high sensitivity and an excellent energy and angular response



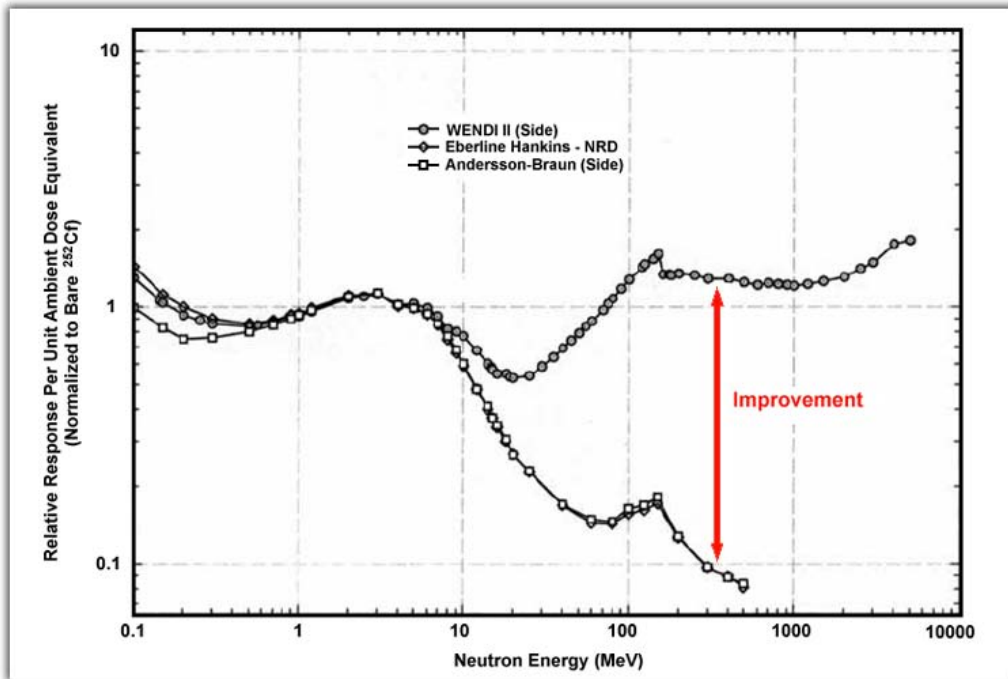
Reference: Olsher et al, Health Physics, 79(2): 170ff, 2000



FHT 762 Wendi-2 with RadEye PX

The Wide Range Neutron Detector FHT 762 combines excellent energy response in the "normal" energy range up to 15 MeV with a close match to the H\*(10) behaviour up to 5 GeV. As well excellent angular response and gamma rejection data are provided by the WENDI-2-design which was originally developed at Los Alamos. No significant spill-over needs to be considered for gamma dose rates up to 100 R/Hr (1 Sv/h).

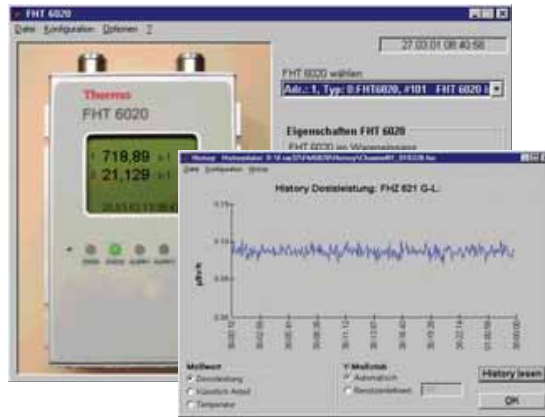
# FHT 762 Wendi-2



Reference: Olsher et al, Health Physics, 79(2): 170ff, 2000



FHT 6020 area monitor



FHT 6020 Software



FHT 762 Wendi-2 with FH 40 G survey meter

## TECHNICAL SPECIFICATION

<b>Measuring range</b>	1 mR/h (0.01 $\mu$ Sv/h) to 10 R/h (100 mSv/h) Cf-252	<b>Gamma-sensitivity</b>	.1-.5 mR/h (1-5 $\mu$ Sv/h) at 10 R/h (100 mSv/h), 662 keV
<b>Sensitivity</b>	0.84 cps/( $\mu$ Sv/h) Cf-252	<b>Ambient temperature</b>	-22° F (-30° C) to 122° F (50° C)
<b>Energy range</b>	25 meV to 5 GeV according to ICRP 74 (1996)	<b>Humidity</b>	up to 90 % non condensing
<b>Angular dependence</b>	$\pm$ 20 % all directions	<b>Atmospheric pressure</b>	500 to 1500 hPa
<b>Linearity</b>	$\pm$ 20 %	<b>Height</b>	12.6 inches (320 mm)
<b>Diameter</b>	9 inches (230 mm)	<b>Weight</b>	30 lb (13.5 kg)

