

Rapiscan ORION 928DX

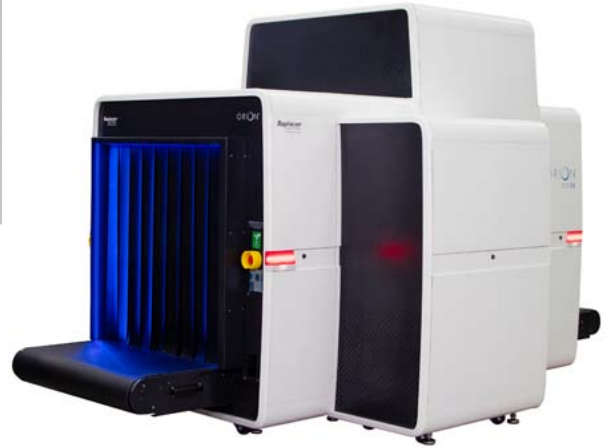
High Performance x-Ray System



baggage & parcel

*inspection
technology*

The new 928DX is a High Performance 1010mm by 1010mm tunnel low conveyor dual view screening system with superb image quality and excellent threat detection alert capabilities..



SPECTRUM 4-COLOR IMAGING

928DX now can exhibit images in the Classic 4-color and the new proprietary Spectrum 4-color (SP4) option providing superior image, allowing improved security by quick and accurate identification of threats and increase in throughput.

EXPLOSIVES AND NARCOTICS DETECTION

Target and NARCScan are designed to detect a wide range of explosives and narcotics respectively in real time during the scanning process by marking a potential threat on the X-ray image. Rapiscan® Systems detection algorithms are based on regulatory approved material analysis techniques.

DUAL MODE AUTO Z_{EFF}

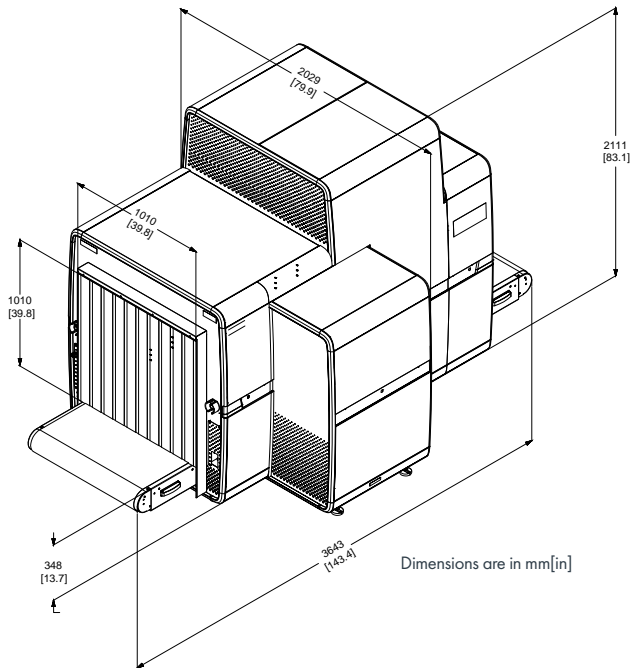
The new dual mode Zeff feature helps with identification of organic materials accurately and quickly either in Range mode which highlights the areas based on range selected by the operator, and/or in Interactive mode which provides the operator the option to display the areas based on the value of the pixel.

EUROPEAN AVIATION COMPLIANCE

928DX performance is in full compliance with the mandatory regulations (EC) No. 300/2008, (EC) Implementing Regulation 1998/2015 and update 815/2017, EC Implementing Decision 8005/2015 and update 3030/2017 for aviation security in the European Union.

- SUPERB IMAGE QUALITY
- EXPLOSIVES & NARCOTICS DETECTION
- LOW DENSITY IMAGE ENHANCEMENT
- MATRIXING, NETWORKING & REMOTE VIEWING

ORION 928DX



KEY FEATURES AND OPTIONS

- Explosive threats, narcotics & density alerts
- Spectrum 4
- 17 Image processing functions
- SINERGY low density enhancement
- Dual Mode Z-effective
- CrystalClear™
- Automatic, Enhanced Image Archiving
- E.U. Approved Threat Image Projection
- Remote Status Monitoring
- Remote Archive Review
- Multi-System Alarm Resolution Network
- Multiplexing and Matrixing
- Tray Return System Compatible
- 13 Languages
- 64-bit Operating System

GOVERNMENT REGULATORY

- Regulation (EC) No. 300/2008 Compliant
- Regulation (EU) No. 185/2010 Compliant
- EU Commissions Decision C(2010) 774 Compliant
- U.K Department for Transport (DfT) TIP Approved

PHYSICAL SPECIFICATIONS¹

DIMENSIONS	L 3,643 mm (143.4 in) W 2,029 mm (79.9in) H 2,111 mm (83.1 in)
TUNNEL SIZE	W 1,010 mm (39.8 in) H 1,010 mm (39.8 in)
CONVEYOR HEIGHT	348 mm (13.7 in)
CONVEYOR LOAD¹	200 Kg (441 lbs)
GROSS WEIGHT	2,105 Kg (4,640 lbs)
WEIGHT (NET)	1,657 Kg (3,653 lbs)

ENVIRONMENT & POWER

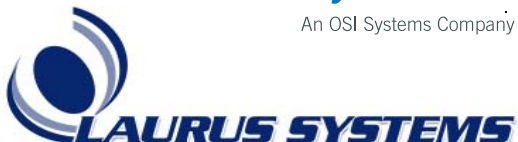
STORAGE TEMP	-20°C to 50°C
OPERATING TEMP	0°C to 40°C
RELATIVE HUMIDITY	5 to 95% non-condensing
SYSTEM POWER	100/110/120/200/208 /220/230/240 VAC ±10%

X-RAY GENERATOR

ANODE VOLTAGE:	160kV
ORIENTATION	Vertically Upward & Horizontal

Rapiscan[®]
systems

An OSI Systems Company



STANDARD SPEED PERFORMANCE²

CONVEYOR SPEED	0.20 m/sec (39.4 ft/min)
POWER	1.3 kW
STEEL PENETRATION	38 mm typical, 37 mm standard
WIRE RESOLUTION	40 AWG typical, 38 AWG standard
SPATIAL RESOLUTION	1.3 mm (0.05 in) Vertical / Horizontal

HIGH SPEED PERFORMANCE²

CONVEYOR SPEED	0.35 m/sec (68.9 ft/min)
POWER	1.3 kW
STEEL PENETRATION	36 mm typical, 35 mm standard
WIRE RESOLUTION	40 AWG typical, 38 AWG standard
SPATIAL RESOLUTION	1.3 mm (0.05 in) Vertical / Horizontal

HYPER SPEED PERFORMANCE²

CONVEYOR SPEED	0.5 m/sec (98.4 ft/min)
POWER	1.3 kW
STEEL PENETRATION	36 mm typical, 35 mm standard
WIRE RESOLUTION	40 AWG typical, 38 AWG standard
SPATIAL RESOLUTION	1.3 mm (0.05 in) Vertical / Horizontal