

ScanX Scout

Ruggedized X-Ray System
With Flexible Film



ScanX Scout is a high performance portable digital X-ray system combining high sensitivity flexible film plates, a rugged battery powered image plate reader and a laptop for detailed forensic level X-ray inspection across the full spectrum of defense and security applications.

ScanX Scout image plates are very thin and flexible for easy access into confined areas and for wrapping around objects of interest. The image plates are available in a range of sizes and can be used individually or mounted in multiple combinations to investigate larger objects.

CR X-ray image plates require no cables nor batteries for use and the entire X-ray operation from setting up the scanner, placing the X-ray plate, X-ray acquisition and image plate scanning can be completed in less than 2 minutes. Plates can be used over 1000 times and can be erased during the scanning process to allow immediate reuse.

The ScanX Scout Image Plate Reader scans the plates either on mains or battery power to produce ultra-high resolution X-ray images in as little as 35 seconds. Its ability to reveal fine wire and electronic component detail makes it an invaluable system for those needing to make fast accurate decisions in the field and equally for lab-based forensic and analytical tasks.

FEATURES

High Resolution Images

ScanX Scout uses high sensitivity flexible image plates to produce 5 lp/mm, 100 micron images while requiring ten times fewer X-ray pulses than polaroid film.

Battery Operation

All the ScanX Scout system components are fully portable and the Image Plate Processor can operate on battery for up to 4 hours without any reliance on main power.

Fast Set up and X-ray Image Acquisition

Unload and set up the ScanX Scout system, shoot X-rays, process and read the images on screen in less than 2 minutes start to finish.

Reduced Film Costs

Upgrading to Digital Film from Polaroid film means lower consumable costs and the ability to store and manage X-ray images in a database for improved and easier report writing and evidential record keeping.

Range of Image Plate Sizes

ScanX Scout X-ray Image Plates are available in a range of sizes: from compact 7" x 9.5" up to long length 14" x 51". All plates can be used in multiple combinations with the Flexray Mounting Accessory for checking larger objects such as sides of vehicles in a single X-ray shot.

Light and easy-to-handle IPs

ScanX Scout Image Plates are easy to handle, carry and deploy and easily pass through the processor with no clips or carousel required. They are lightweight and flexible, need no cables nor battery for operation and are ideal for most Defence and Security Tasks including /EOD/Search/WIT and Detailed Inspection.

Suitable for tough environments

The ScanX Scout Image Plate Reader is transported in a ruggedized case with integrated lifting handles making it easy to deploy to any task. Tried and tested in tough Police and Military environments.

ScanX Scout

Technical Specifications – Image processor and Image Plates

Scout Processor



Dimensions:	15.5 x 17.5 x 14.75"	Laser Class:	1, compliance with FDA HHS 21 CF1040.10 and IEC 60825-1
Weight:	43 lbs without battery 45 lbs with battery	Data Transfer:	USB
Resolution:	5p/mm	Power:	Mains or 4 hour battery (24DC)
Pixel Pitch:	300-100 microns	Power:	582 x 752 pixels

NSN: 6350-99-236-1928

X-Ray Image Plates



Standard Sizes:	Standard: 8 x 10" Medium: 11 x 15" Large: 14 x 17"	Plate Accessories:	Flexible Cassettes Protective Covers Rigid Carbon Fiber Cassettes FlexRay Cassettes
------------------------	--	---------------------------	---

Longer Length:	14 x 36" 14 x 51" Other custom sizes on request
-----------------------	---

Flexray Image Plate Mounting System



The Flexray Image Plate Mounting system enables the examination of large objects by combining multiple image plates in a variety of configurations. The ability to check large surface areas with a single X-ray shot reduces the time spent in the target area and ultimately time spent on task. Standard size plates can be used to combine from two to nine plates together. Longer length plates can be used in combinations of two or three together enabling over '3ft squared' to be checked using a single X-ray exposure.

Flexray image plate kits include stiffened canvas image plate cassettes, Velcro fastenings, guy line, eyelets, carabiners and suction cups giving you the flexibility to free-stand or hang image plates behind the target or to directly attach them to the area of interest.

Firearms Inspection



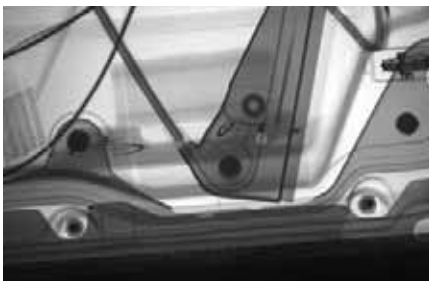
EOD/CMD Work



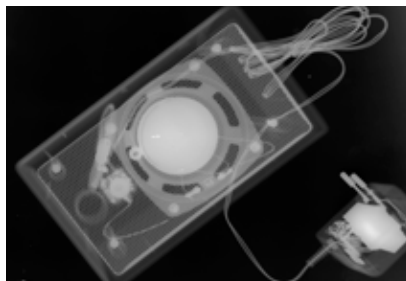
IED and Weapons Identification



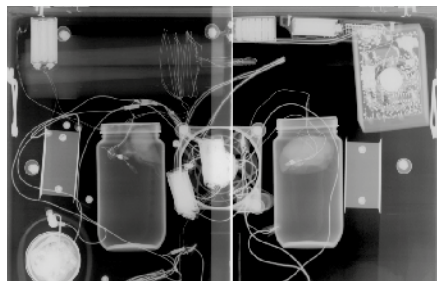
Customs Vehicle Inspection



Counter Surveillance






Stitch multiple images together



ScanX Scout

Technical Specifications - Portable X-ray Generators

X-Ray Generator Options	XR200 Standard Generator
	Applications: Police, General Security, Postal Blast Investigation
	Penetration: 15mm steel
	Pulses per charge: 4,000
	Dimensions: 31.75 (l) x 11.5 (w) x 19 (h) cm
	Weight: 5.5kgs with battery
	XR150 Lightweight Generator
	Applications: Special Forces, Light Duty Applications
	Penetration: 15mm steel
	Pulses per charge: 1,500
	Dimensions: 10.4 (l) x 8 (w) x 27.3 (h) cm
	XRS-3 Heavy Duty Generator
	Applications: Military, Counter IED, UXO Inspection, TSCM, NDT
	Standard Penetration: 26mm steel
	Pulses per charge: 4,000
	Dimensions: 35.5 (l) x 11.5 (w) x 19 (h) cm
	Weight: 5.5kgs with battery

Laptop Options



ScanX Scout Drivers and Scanview Software is supplied with a high performance laptop running Windows 7 Professional 32 bit. Minimum spec: Intel Dual Core Processor, 500 GB Hard Drive, 4 Gb Memory.

Other brand name variants and ruggedized MilSpec models with foreign language and OS options are available.

Cases



Scanview X-ray Imaging Software Features:

- Select Scanning Resolution
- Scan Image
- Erase Image Plate
- Reverse Image Plate
- Brightness and Contrast
- Gamma Correction/Stretch
- Pseudo Color Images
- Inverse (polarity) image
- Edge Enhancement,
- Find Edges
- Smoothing
- Sharpening
- 3D (Emboss)
- Image Rotate,
- Flip and Mirror image
- Sub-image • Summing
- Clean
- Import/Export Images
- Digital Zoom
- Multiple Zoom including Zoom Thumbnail window
- Zoom to Region of Interest
- Grid Overlay
- Image Stitching and Cropping
- Calibrate measurements
- Measure (multiple units)
- Multiple Undo, Image Restore
- Copy/paste
- Overlay
- Histocontrast
- Histogram equalization
- Annotate Images• Save Annotations
- Select Region
- Shaped Regions
- User login
- Email option
- Save and export images in windows formats – jpg, bmp, tif• Query and Sort in database
- Ability to back up database including name, date, category
- Battery Monitor
- On Screen Help
- Vocal annotation
- Compact Database
- Foreign language options
- Custom options

