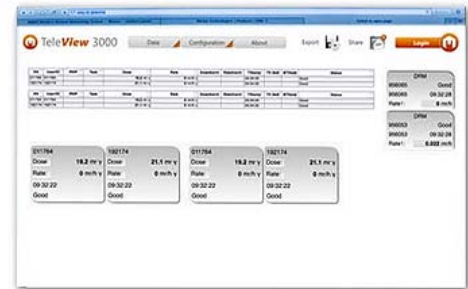


WRM2

Wireless Remote Monitoring System



The WRM2 represents teledosimetry technology for the new millennium. This compact, robust system provides unparalleled features for wireless personnel and area monitoring and increases worker awareness of radiological environments through enhanced alarm indications.



DESCRIPTION

The WRM2 System provides a means to monitor and supervise a population of various radiation monitors spread out over a large area. It wirelessly links devices equipped with WRM2 transmitters and can display their statuses and measurements on a computer comfortably outside the area where the radiation measurement is taking place.

- Provides real-time readouts and statuses of transmitter equipped units operating in an area.
- Enables a supervisor outside a radiation work area to be instantly alerted to alarm conditions happening inside.
- Compact and rugged equipment for indoor or outdoor applications.
- Roughly 6000ft Line-of-Sight range, extendable with the use of MESH Repeaters.

FEATURES

- Compact and rugged for indoor/outdoor applications
- High visibility LED, high decibel and vibration alarm indications
- Long-life battery and AC power
- Improved clip design
- Exceptional range >6000ft LOS and extendable using MESH Repeaters
- Offered in 900 MHz and 2.4 GHz frequencies
- Two-way communication options
- Compatible with MGPI air monitors and portable instruments

WRM2

SPECIFICATIONS

OPERATING CHARACTERISTICS

Transmit Power Output	100 mW (900 MHz), 50 mW (2.4GHz)
Receiver Sensitivity	-110 dBm (900 MHz) and -105 dBm(2.4 GHz)
Frequencies	900 (910-917) MHz or 2.4 GHz spreadspectrum hopper
Over the air data stream	19,200 BAUD
Addressable Range	from 0 to 65,000
Programmable transmission intervals	from 1 sec to 16 sec

FCC approved, IC Certified, 2.4 GHz unit is CE marked. Gamma and beta gamma dosimeter compatible.

ELECTRICAL CHARACTERISTICS

	PAM-TRX	Base Transceiver	MESH Repeater/EXT	IMUX
Battery Type	1.5 VDC AA alkaline	1.5 VDC AAA NiMH	9 VDC Alkaline	1.2 VDC AA NIMH
Battery Life	35+ hours	4-8 hours	4-8 hours	24+ hours
External Power	3 VDC std 1.3 x 3.5mm coax	15 VAC 1A Coax center + pin	15 VAC 1A Coax center + pin	5 VDC 2.5A MUX connector

ELECTRICAL CHARACTERISTICS

	PAM-TRX	Base Transceiver	MESH Repeater/EXT	IMUX
Buzzer Frequency	2200±500Hz			
Sound Level	>85dB @ 30cm			
LED's	Top & Front	Top Panel	Top Panel	Front case
Vibration	Standard Pager Type			
Controls	Push button	Rotary & slide switches	Slide switch	
Ruggedness	6 drops @ 1.5m on concrete	2 drops @ 1m on concrete	2 drops @ 1m on concrete	2 drops @ 1mon concrete

PHYSICAL CHARACTERISTICS

Operating Temp	14° to 122° F (-10° to 50° C)
Relative Humidity	less than 99% (without condensation)

MECHANICAL CHARACTERISTICS

	PAM-TRX	Base Transceiver	MESH Repeater/EXT	IMUX
Height	4.6" (120mm)	1.5" (40mm)	1.2" (30mm)	4.5" (115mm)
Width	2.6" (65mm)	5.5" (150mm)	2.75" (70mm)	2.6" (65mm)
Thickness	1.3" (32mm)	9.5" (235mm)	5.5" (150mm)	1.6" (41mm)
Weight	7.7oz (220g) w/bat & DMC	30 oz (850g) w/batteries	11oz (310g) w/bat & antenna	12oz (340g) w/batteries



PAM-TRX



Mesh Repeater/EXT



IMUX

